

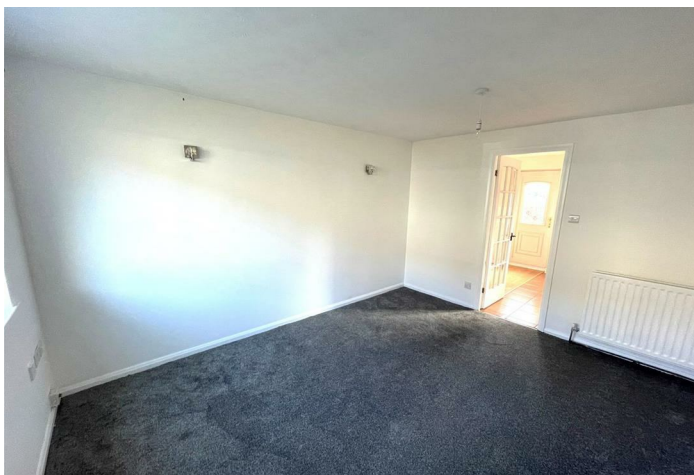


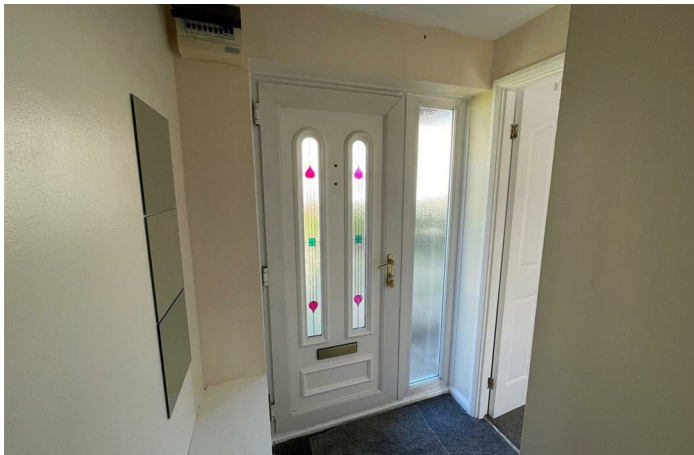
14 Wallington Court

Seaton Delaval, Whitley Bay NE25 0DA

- End Link House
 - Lounge
 - Bathroom/w.c
- Gas Central Heating
- Close to Amenities
- Three Bedrooms
- Kitchen/Diner
- Gardens front and rear
- Upvc Double Glazing
- Viewing Recommended

£149,950





A great family home or first time purchase. This three bedroomed end link home situated in a popular area of Seaton Delaval convenient for local shops, bus routes and a walk to the new Northumberland Line train. The accommodation comprises an entrance lobby, Lounge to the front and to the rear is dining kitchen with fitted wall, floor and drawer units, built in electric oven and hob. There is a Upvc door to the sunny rear garden which has a gate to the rear for parking. To the first floor there are three bedrooms and a bathroom/w.c with three piece white suite and over bath shower. There is a small garden to the front. The property has been recently decorated and has new carpets. There is gas central heating and Upvc double glazing. Viewing recommended.

Entrance Lobby

Lounge

12'6 x 13'7

Kitchen/Diner

15'3 x 10'4

Bedroom 1

11'3 x 8'7

Bedroom 2

11'8 x 8'8

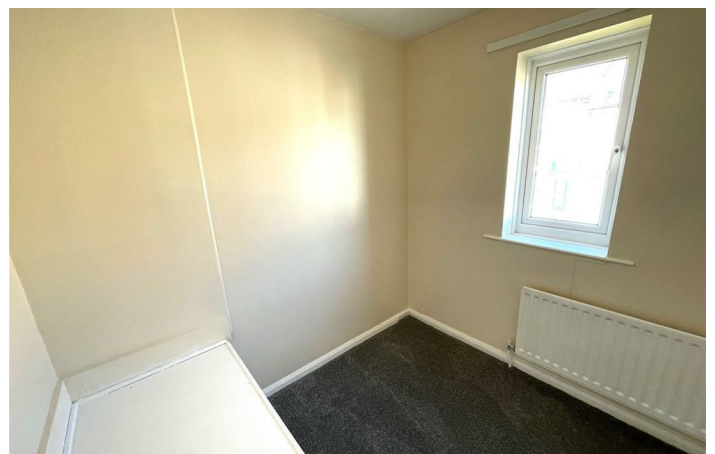
Bedroom 3

8'5 x 7'6

Bathroom/w.c.

External

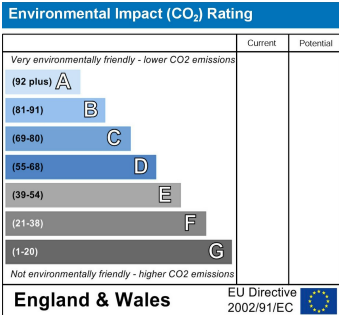
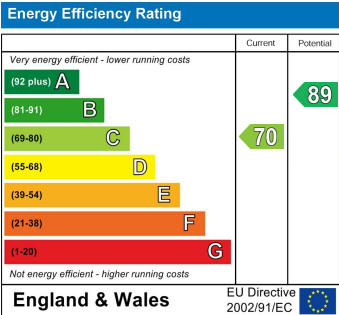
Gardens front and rear







Local Authority Northumberland
Council Tax Band B
EPC Rating C
Tenure Freehold



ML Estates Sales Office
27 Avenue Road, Seaton Delaval, Tyne
And Wear, NE25 0DT

Contact
0191 237 60 60
sd@mlestates.co.uk
www.mlestates.co.uk/

Agents Note: Whilst every care has been taken to prepare these particulars, they are for guidance purposes only. All measurements are approximate and for general guidance purposes only and whilst every care has been taken to ensure accuracy, they should not be relied upon and potential buyers/tenants are advised to recheck the measurements.